



# Lighting for Tomorrow

2011 Competition Awards

Dear Readers,

Lighting for Tomorrow presents the winners and honorable mentions of the 2011 Solid-state Lighting (SSL) and Lighting Controls competitions.

Since 2002, the Lighting for Tomorrow competition has recognized the best of the new energy-efficient residential lighting products and especially those with consumer appeal whose installation and use are helping to transform the market for efficient lighting.

We've learned that consumers will respond to products which are not only energy efficient, but which also provide the appearance and quality of light appropriate for the application.

As a result, the market for both fluorescent and solid-state luminaires has grown substantially and there is now an expanding range of luminaires available for every type of home, room and application.

In 2006, Lighting for Tomorrow opened the competition to the new light emitting diode (LED) technology by judging SSL products designed for four specific niche applications. Those winning products successfully integrated the new white-light LEDs that delivered high quality, white light with application efficiency comparable to standard lighting technologies. Over time the SSL competition has expanded and in 2011 it was open to a variety of SSL fixture types as well as screw-in replacement lamps designed to replace familiar types of household bulbs.

Lighting for Tomorrow has continued to look for ways to eliminate the other market barriers that slow the adoption and use of energy-efficient residential lighting products. A significant barrier, according to manufacturers, energy organizations and consumers themselves, is the compatibility of fluorescent and LED-powered fixtures with various kinds of lighting controls. In response, Lighting for Tomorrow launched a lighting controls competition in 2010.

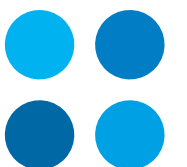
The LED luminaires, LED replacement lamps and compatible lighting controls highlighted in this brochure were carefully evaluated by a diverse panel of expert judges based on their performance, quality and design. Some products were judged clear winners since they exceeded the criteria and scored higher than other products in their respective categories. Others were recognized as honorable mentions because they incorporated fresh ideas or promising attributes. For more information regarding the judges and evaluation criteria, please see page 4.

Overall, the Organizers are pleased to see that the quality of the entries continues to improve every year. In particular, the SSL products featured in this brochure represent value for the residential consumer even though it is important to recognize that it is still early in the SSL market development process and we don't yet have long-term experience with white LEDs in general illumination applications.

We hope you enjoy the products showcased in this brochure and we look forward to supporting the continued development of energy efficient lighting.

Sincerely,

The Lighting for Tomorrow Organizers





**American Lighting Association**

The American Lighting Association (ALA) is the only trade association representing residential lighting manufacturers, showrooms, distributors, manufacturer representatives, component manufacturers and industry-related companies. ALA members, totaling more than 1,200 in the United States, Canada and the Caribbean, are dedicated to providing the public with quality residential lighting.

[www.americanlightingassoc.com](http://www.americanlightingassoc.com)



**Consortium for Energy Efficiency**

CEE is an award-winning consortium of efficiency program administrators from the United States and Canada that unifies program approaches across jurisdictions to increase impact in fragmented markets. By joining forces at CEE, individual electric and gas efficiency programs are able to partner not only with each other, but also with other industries, trade associations, and government agencies. Working together, administrators leverage the effect of their ratepayer funding, exchange information on successful practices and, by doing so, achieve greater energy efficiency for the public good.

[www.cee1.org](http://www.cee1.org)



**Underwriters Laboratories, Inc.**

UL is a global independent safety science company offering expertise across five key strategic businesses: Product Safety, Environment, Life & Health, University and Verification Services. UL has tested and certified lighting products in the global marketplace for over one hundred years. UL provides testing and certification services to industry standards including UL, ANSI, IEC, NEMA, FCC, and IESNA. Additionally, UL is a leading provider of Photometric Performance and EMC testing in support of well-known lighting programs such as ENERGY STAR®, Lighting Facts, and Design Lights Consortium.

[www.ul.com](http://www.ul.com)

Lighting for Tomorrow would like to thank the following cosponsors, who generously supported the competition by providing funding or in-kind contributions in 2011.



Across the United States and Canada, energy efficiency program administrators like the organizations listed above provide resources for retailers, builders, and consumers who are interested in making energy efficient lighting choices. These organizations have a mission to help their customers save energy. Some offer educational seminars or training; others offer monetary incentives such as rebates.

If you are interested in learning more, start with your local electric utility. Call their customer service or energy efficiency department to ask if they offer educational

assistance or incentives for the installation of ENERGY STAR® qualified lighting, such as the award winning Lighting for Tomorrow fixtures highlighted in this publication.

Other sources of information include the ENERGY STAR Web site at [www.energystar.gov](http://www.energystar.gov), where a list of incentives by ZIP code is available. The Consortium for Energy Efficiency also compiles a "Residential Lighting Program Summary," which provides a list of energy efficiency program offerings for residential lighting. This summary is available at [www.CEE1.org](http://www.CEE1.org).

The 2011 Lighting for Tomorrow judging panel consisted of 9 judges drawn from various areas of the residential lighting community. The judging panel included a diverse cross-section of experts in lighting technology, lighting sales, energy efficiency, lighting design, communications, and homebuilding.

#### The 2011 judges were:

<b>Kathryn M. Conway</b>	LED Consulting	Nassau, NY
<b>Robert Henderson</b>	Progress Energy	Raleigh, NC
<b>Tanya Hernandez</b>	Underwriters Laboratories, Inc.	Durham, NC
<b>Mary Ann Kelly</b>	Platinum Lighting Concepts	Cranberry Twp, PA
<b>Steven Mesh</b>	Pacific Gas and Electric Company	San Francisco, CA
<b>Erik Page</b>	Erik Page & Associates Inc.	Fairfax, CA
<b>Bjarne Pedersen</b>	Architectural Lighting Design	Toronto, ON
<b>Chad Ray</b>	Olde Heritage Builders	Zebulon, NC
<b>Laura Van Zeyl</b>	Residential Lighting Magazine	Arlington Heights, IL

The judges participated in a two day judging event held on June 7th and 8th in Research Triangle Park, NC. The judging event was hosted by Underwriters Laboratories at their new UL University facility. The judges based their decisions on the requirements and evaluation criteria, detailed below.

The lighting controls entries were evaluated based on functionality, value, ease of installation and use, innovation, and their compatibility with other systems and existing luminaires.

The SSL entries were judged on the amount, distribution and quality of light provided, their aesthetic appearance both lighted and unlighted, and application efficiency. The lighting performance of all LED products was verified either by manufacturer-provided photometric reports from an accredited NVLAP laboratory or were tested afterwards by an accredited NVLAP laboratory to verify wattage, light output, color temperature, and color rendering.

The judging panel awarded bonus points for entries exhibiting other desirable characteristic such as innovation, ability to dim, sustainability, and being dark-sky friendly.

As demonstrated by the judging criteria, the SSL entries that are showcased in this brochure were selected based on the entrant's ability to integrate LEDs in a residential luminaire that produces high quality white light for the intended application and uses less energy than comparable technologies. The lighting control entries were selected based on their ability to be easily installed and used in addition to their ability to successfully control both compact fluorescent and LED light sources.

#### Winners

##### Solid State Lighting Fixtures

- **Designers Fountain** – Aero 4-Head Fixed Track
- **Holtkötter International, Inc.** – Bernie Chairside Reading Lamp
- **Cooper Lighting** – Halo 4-inch Adjustable Round and Square Downlight
- **OSRAM SYLVANIA** – ULTRA LED A19 Lamp
- **Cree LED Lighting** – CR4 Downlight
- **Lithonia Lighting®** – Outdoor LED Versatile Area / Wall Light

##### Solid State Lighting Screw-in Replacement Lamp

- **OSRAM SYLVANIA** – Ultra A-line

##### Lighting Control

- **Lutron Electronics Co., Inc.** – Diva® C·L™ Dimmer

The judging panel decided that the following should be given an honorable mention to recognize their new or beneficial features.

#### Honorable Mentions

##### Solid State Lighting Fixtures

- **Edge Lighting** – Premium Soft Strip LED  
The variety of potential applications, arrangements and mounting options of this fixture prompted the judging panel to recognize this trend-setting product.
- **MaxLite** – LED FlatMax Flat Panel  
The judging panel was particularly impressed with the performance of this fixture.

##### Solid State Lighting Replacement Lamps

- **Cree LED Lighting** – LRP38-1000L
- **Osram Sylvania** – ULTRA LED PAR38  
Size and weight are concerns as manufacturers strive to develop these directional lamp products. The judging panel recognized these products for their excellent lighting performance.
- **Osram Sylvania** – ULTRA LED B10  
This product compared favorably to the appearance of traditional clear candelabra-based lamps for exposed-lamp luminaires.

##### Lighting Control

- **Lutron** – RadioRA® 2 Phase-Adaptive Dimmer  
The judging panel thought this product dimmed LED replacement lamps particularly well.

## Aero 4-Head Fixed Track

Manufacturer: [Designers Fountain](#)

Designer: [Dan Dix](#)



### Luminaire Measurements:

- Wattage: 33 watts
- Light Output: 1186 lumens
- Luminaire Efficacy: 36 lm/W
- CCT: 3175
- CRI: 82
- Test Laboratory:  
UL – Luminaire Testing Laboratory (LTL)
- Report Number: 23940

### Model Number / Dimensions:

FT71511D-BCB  
Height: 6 3/8" Length: 36 3/4" Width: 6 1/8"

### Availability:

Available January 2012

### Contact Information:

Designers Fountain  
Marcus Guild  
National Sales Manager  
20101 S. Santa Fe Avenue  
Rancho Dominguez, CA 90221  
(310) 886-3718  
[www.designersftn.com](http://www.designersftn.com)

"Aero" is an Omni-Directional LED Light source with dimming feature that blends the most up-to-date innovative LED technology with a distinctive modernistic style imparting the illusion of action. Aero addresses a multitude of residential, hospitality, office and retail applications by providing directional light over areas of frequent use or can highlight points of interest with a dramatic effect. Available in a sleek Black Nickel over Copper Plate finish with a frosted diffuser to shield the lamps. Features include full-range continuous dimming from 100% for task lighting down to 5% providing soft area ambient lighting. This energy efficient design meets all ENERGY STAR efficiency standards.

## Bernie Chairside Reading Lamp

Manufacturer: [Holtkötter International, Inc.](#)

Designers: [Thomas Köhler](#), [Bernd Swolinski](#),  
[Chris Johnson](#) and [Pau I W. Eusterbrock](#)



### Luminaire Measurements:

- Wattage: 14.6 watts
- Light Output: 668 Lumens
- Luminaire Efficacy: 46 lm/W
- CCT: 2704
- CRI: 82
- Test Laboratory:  
UL – Luminaire Testing Laboratory (LTL)
- Report Number: 23942

### Model Number / Dimensions:

6426/8\*LED  
Width: Up to 21" Height: 40-50"

### Availability:

Currently available

### Contact Information:

Holtkötter International, Inc.  
P.O. Box 623  
South St. Paul, MN 55075  
(800) 899-5444  
[www.holtkoetter.com](http://www.holtkoetter.com)

This new floor lamp provides comfortable, bright-white light for reading and other detailed tasks, while allowing the user full dimming control as needed. The proprietary Dimm-System Punkt 1 (Dimm-System \*P1) has been manufactured to control the low-voltage LED technology, allowing for a drastic reduction in the amount of energy used for the light output provided. Special features of this sophisticated proprietary dimming functionality include point dimming, soft on, delayed / soft off, and complete dimming cycle. Additionally, the specific use and application of the LEDs has been configured for soft light dispersion, reducing shadows and creating a better dispersion of heat. This lamp is currently available in four hand-worked finish options: Chrome, Hand-Brushed Old Bronze, Polished Brass/Brushed Brass combination finish and Satin Nickel.

## Halo H4 LED 4-inch Adjustable Gimbal Series

Manufacturer: **Cooper Lighting**



### Luminaire Measurements:

- Wattage: 14.2 watts
- Light Output: 636 lumens
- Luminaire Efficacy: 45 lm/W
- CCT: 3075 K
- CRI: 83
- Test Laboratory: Cooper Lighting Photometric Laboratory
- Report Number: SP20053 Rev 2

### Model Number / Dimensions:

ELG405830WH – H456ICAT120D  
Halo LED 4" Adjustable Gimbal,  
25° beam (reflector), White

### Availability:

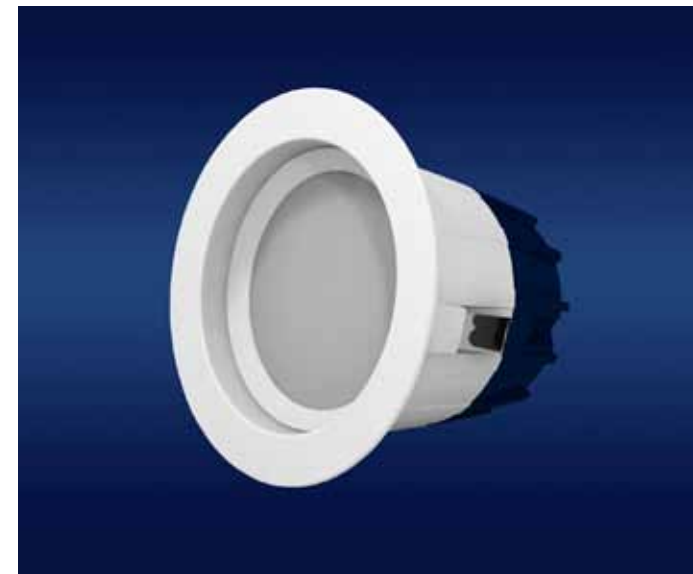
Currently available

### Contact Information:

Cooper Lighting  
1121 Highway 74 South  
Peachtree City, GA 30269  
770-486-4800  
www.CooperLighting.com

## ULTRA RT4 LED Recessed Downlight Kit

Manufacturer: **OSRAM SYLVANIA**



The SYLVANIA ULTRA RT4 LED Recessed Downlight Kit includes a four-inch LED recessed downlight with white trim and a medium base socket adapter. The sleek design complements most ceilings with its flush mounting style and aesthetic appeal. Available in both 2700K and 3000K color temperatures, the 9-watt version delivers 550 lumens of light, and is comparable to a standard 50-watt incandescent R20 light bulb. The light can be quickly and easily installed into most standard four-inch can fixtures, including insulated ceiling (IC) and non-IC cans, and Airtight (AT) housings. The RT4 provides quality white light, high energy-efficiency and superior optical design, significantly improving the appearance of ceiling lighting in homes everywhere. The long life of the recessed light will save consumers countless trips up the ladder to change out traditional recessed lighting bulbs. It has been tested and certified to ETL® standards, is currently being tested for ENERGY STAR® qualification, has earned a U.S. Department of Energy Lighting Facts® label and meets California's Title 24 high-efficiency luminaire requirements.

### Luminaire Measurements:

- Wattage: 8.4 watts
- Light Output: 583 lumens
- Luminaire Efficacy: 69 lm/W
- CCT: 3038 K
- CRI: 83
- Test Laboratory: Metrology & Analytics Laboratory
- Report Number: MR2011-R/MAS0501-BE

### Model Number / Dimensions:

LED/RT4/550/827/FL80/WTR/WRFL (2700 K)

LED/RT4/550/830/FL80/WTR/WRFL (3000 K)

### Availability:

Currently available

### Contact Information:

OSRAM SYLVANIA  
100 Endicott Street  
Danvers, MA 01923  
(978) 777-1900  
www.sylvania.com/RT4

## CR4 Downlight

Manufacturer: **Cree LED Lighting**



The CR4 downlight is an innovative and affordable solution for use in residential and light commercial applications. Designed for new construction and retrofit, it easily installs into most standard four-inch housings and is dimmable to 5% with traditional dimmers. Powered by Cree TrueWhite® Technology, the CR4 generates incandescent-like light with high color accuracy, while consuming only a fraction of the energy of traditional fixtures. It comes with a standard 5 year warranty and is designed to last 50,000 hours, even in recessed insulated housings.



### Luminaire Measurements:

- Wattage: 9 watts
- Light Output: 550 lumens
- Luminaire Efficacy: 61 lm/W
- CCT: 2700 K
- CRI: 90
- Test Laboratory: CSA International
- Report Number: 30018263-LM79

### Model Number / Dimensions:

CR 4  
Depth: 3 1/2" Width: 5" Aperture: 3 1/4"

### Availability:

Call for Availability

### Contact Information:

Cree, Inc.  
4600 Silicon Drive  
Durham, NC 27703  
(919) 313-5300  
[www.CreeLEDLighting.com](http://www.CreeLEDLighting.com)

## Outdoor LED Versatile Area / Wall Light

Manufacturer: **Lithonia Lighting®**



The Outdoor LED, Versatile Area/Wall Light provides maintenance-free general illumination for outdoor use in residential and commercial applications. The fixture is ideal for any outdoor space requiring reliable safety and security with its sturdy, weather-resistant aluminum housing with a bronze finish. The 50,000 hour, maintenance-free fixture has a clear polycarbonate lens to protect the optics from moisture, dirt and other contaminants. It features an adjustable Dusk-to-Dawn photocell, standard, that automatically turns light on at dusk and off at dawn for convenience and energy savings. The photocell can be disabled by rotating the photocell cover. The fixture can be mounted on a wall or arm-mount (mounting arm sold separately). It is UL Certified to U.S. safety standards, wet location listed and has a five-year warranty. Operating temperature is -30°C to 40°C.



### Luminaire Measurements:

- Wattage: 35.3 watts
- Light Output: 2562 lumens
- Luminaire Efficacy: 73 lm/W
- CCT: 4126 K
- CRI: 65
- Test Laboratory: Conyers Laboratory
- Report Number: LTL20254S

### Model Number / Dimensions:

OLAW23 40K PE BZ

Width: 9 7/8" Height: 3" Depth: 10 1/2"

### Availability:

4000 K version available in December 2012  
5300 K version available in September 2011

### Contact Information:

Acuity Brands Lighting, Inc.  
David P. Zizzi  
One Lithonia Way  
Conyers, GA 30012  
(770) 860-2489  
[www.acuitybrands.com](http://www.acuitybrands.com)

## ULTRA LED A19 Lamp

Manufacturer: **OSRAM SYLVANIA**



The new dimmable SYLVANIA ULTRA LED 18W A19 lamp is the industry's first LED replacement for the 100W incandescent light bulb. With a typical 1600 lumen output (planned production\*), and saving 80% in energy costs, the 18W A19 lamp will allow consumers to confidently replace their existing incandescent bulbs with the superior performance and identical shape of the SYLVANIA LED bulb. Over the course of the lifetime of the bulb, a consumer can expect to save up to \$225 in energy savings with this simple replacement.

### Luminaire Measurements:

- Wattage: 17.2 watts
  - Light Output: 1166 lumens
  - Luminaire Efficacy: 68 lm/W
  - CCT: 2633 K
  - CRI: 82
  - Test Laboratory:  
UL – Luminaire Testing Laboratory (LTL)
  - Report Number: 23948
- \*Design process samples tested

### Model Number / Dimensions:

A19

### Availability:

First quarter 2012

### Contact Information:

OSRAM SYLVANIA  
100 Endicott Street  
Danvers, MA 01923  
1-800-LIGHTBULB  
www.sylvania.com

## Diva® C·L™ Dimmer

Manufacturer: **Lutron Electronics Co., Inc.**



The Diva® C·L™ dimmer from Lutron works with dimmable CFLs and LEDs, which are expected to become even more widely adopted over the next 10 years. In addition, it will control incandescent and halogen lamps which are still in use today. The new dimmer uses Lutron's HED™ Technology, featuring advanced dimming circuitry designed for compatibility with most high efficacy light bulbs. The dimmer can even dim a mixed load of light sources (i.e. dimmable LED and halogen bulbs) on the same circuit.

Over the last few years, CFL and LED bulbs capable of dimming have become more readily available but many still have performance issues when used with a standard incandescent dimmer. Lutron's Diva C·L dimmer specifically addresses issues commonly found when dimming these bulbs including lights turning off while being dimmed (called drop-out), not turning on, and turning off unexpectedly or flickering. Lutron continuously tests and publishes a list of approved dimmable CFL and dimmable LED bulbs so that consumers can be sure of smooth dimming performance.

This new dimmer has been engineered to solve these issues and is UL listed to work with a broad range of lamps, ensuring that today's dimmer is compatible with tomorrow's light sources. For more information, please visit [www.lutron.com/CLDimmers](http://www.lutron.com/CLDimmers).



### Model Number / Dimensions:

DVCL-153P-XX, where XX denotes Gloss Color  
DVSCCL-153P-ZZ, where ZZ denotes Satin Color  
Dimensions (with wallplate):  
2.94" wide x 4.69" high x 1.31" deep

### Availability:

Currently available

### Contact Information:

Lutron Electronics Co., Inc.  
7200 Suter Road  
Coopersburg, PA 18036  
(610) 282-3800  
[www.lutron.com](http://www.lutron.com)

## Premium Soft Strip LED with Soft Line Mounting

Manufacturer: [Edge Lighting](#)

The Premium Soft Strip (SS2P) provides high levels of illumination with superior color quality. Available in a variety of increments, Soft Strip offers easy plug-in connectors on each end, which allow for making turns and custom configurations. The flexible copper strip, with an optically clear protective coating, utilizes tightly spaced LEDs to eliminate dark spaces and maximize uniformity. Per foot, the system consumes 2.3 watts and delivers 182 lumens. SS2P dims to 1% of full light output using an electronic low-voltage dimmer with exclusive Edge Lighting electronic power supply.

Self-adhering, SS2P mounts to most smooth finished surfaces with integral 3M tape. Designed for indoor, open air environments, SS2P includes a flexible aluminum heat sink to extend LED life. Typical applications include task lighting, under/above cabinet, cove, retail, closets, wine cellars and toe kicks.

SS2P can also be installed with Soft Line (SL) mounting hardware for indirect lighting. SL uncoils like a retractable tape measure, creating a line between opposing walls or ceiling surfaces. Using the adjustable mounting turnbuckles, the SL system supports the SS2P, or any Edge Lighting Soft Strip, at a variety of angles. Using multiple SLs in varying lengths and angles can create a 3-dimensional look that is as functional as it is visually interesting.

## LED FlatMax Flat Panel

Manufacturer: [MaxLite](#)

A high performance LED flat panel designed to lay in to drop ceilings; typically used to replace 2'x 2' and 2'x 4' fluorescent fixtures. Panels are fully dimmable, and are compatible with building controls, motion sensors, timers, and daylight harvesting systems. The design of the panels produces an even, consistent shadowless light. The LEDs mean long life, high lumen maintenance, high CRI, and low maintenance, with no hazardous materials. A direct lit version is also available, which delivers 2590 lumens from 43 watts (60 lumens/watt)

### Luminaire Measurements:

- Wattage: 64.3 watts
- Light Output: 3262 lumens
- Luminaire Efficacy: 51 lm/W
- CCT: 3295 K
- CRI: 86
- Test Laboratory: UL – Luminaire Testing Laboratory (LTL)
- Report Number: 22125

### Luminaire Measurements:

- Wattage: 13.9 watts
- Light Output: 731 lumens
- Luminaire Efficacy: 53 lm/W
- CCT: 3097 K
- CRI: 80
- Test Laboratory: Intertek
- Report Number: 100320509CRT-001

### Model Number / Dimensions:

Soft Strip Model Number: SS2P-12V-4-WW  
 SS2P Length: 1" or 1-25' Width: 1/2"

Soft Line mounting hardware Model Numbers:  
 SL-20-SA; SLT-SA  
 SL Length: up to 40' Width: 1"

### Availability:

Currently available

### Contact Information:

Edge Lighting  
 1718 W. Fullerton Ave.  
 Chicago, IL 60614  
 (773) 770-1195  
[www.edgelighting.com](http://www.edgelighting.com)



### Model Number / Dimensions:

MLFP1X4  
 Length: 47 3/4" Width: 11 3/4" Depth: 1.68"

### Availability:

Currently available

### Contact Information:

MaxLite  
 12 York Avenue  
 West Caldwell, NJ 07006  
 (800) 555-5629  
[www.maxlite.com](http://www.maxlite.com)



## LRP38-1000L

Manufacturer: [Cree LED Lighting](#)

The LRP38-1000L lamp is a revolutionary high output PAR38 replacement that combines the beauty and intensity of halogen with industry-leading efficacy and longevity. It provides dimming to 20% and spot, narrow-flood, and flood beam angles. The LRP38-1000L combines patented Cree TrueWhite® Technology with a unique TIR optical approach to deliver higher quality light with unrivaled 92 CRI minimum. It comes with a standard 5 year warranty and is designed to last 50,000 hours in open fixtures.

### Luminaire Measurements:

- Wattage: 12.8 watts
- Light Output: 1006 lumens
- Luminaire Efficacy: 78 lm/W
- CCT: 3010 K
- CRI: 93
- Test Laboratory: OnSpex
- Report Number: 30017011

### Model Number / Dimensions:

LRP38-1000L  
 Depth: 5 3/16" Width: 4 13/16"

### Availability:

Currently available

### Contact Information:

Cree, Inc.  
 4600 Silicon Drive  
 Durham, NC 27703  
 (919) 313-5300  
[www.CreeLEDLighting.com](http://www.CreeLEDLighting.com)



## ULTRA LED PAR38 Lamp

Manufacturer: [OSRAM SYLVANIA](#)

The new dimmable SYLVANIA ULTRA LED 24W PAR38 lamp is equivalent to a 120W Halogen PAR38 light bulb with a typical 1650 lumens output. Saving 80% in energy, the 24W PAR38 bulb will, over the course of the lifetime of the bulb, save up to \$528 in energy savings. With a CRI of 90 for outstanding color definition and clarity, the 24W PAR38 has numerous commercial and residential applications.

### Luminaire Measurements:

- Wattage: 24.2 watts
- Light Output: 1676 lumens
- Luminaire Efficacy: 69 lm/W
- CCT: 3041 K
- CRI: 91
- Test Laboratory: UL – Luminaire Testing Laboratory (LTL)
- Report Number: 23946

### Model Number / Dimensions:

PAR38

### Availability:

2012

### Contact Information:

OSRAM SYLVANIA  
 100 Endicott Street  
 Danvers, MA 01923  
 1-800-LIGHTBULB  
[www.sylvania.com](http://www.sylvania.com)



## ULTRA LED B10 Lamp

Manufacturer: [OSRAM SYLVANIA](#)

The new dimmable SYLVANIA ULTRA LED 3.5W B10 lamp is equivalent to a 25W incandescent B10 light bulb with a typical 150 lumen output. Saving 86% in energy over the course of the lifetime of the bulb, the 3.5W B10 bulb will save up to \$35 in energy savings. Available in both candelabra and medium base, the dimmable B10 is ideal for applications such as chandeliers and wall sconces in both commercial and residential settings.

### Luminaire Measurements:

- Wattage: 3.4 watts
- Light Output: 136 lumens
- Luminaire Efficacy: 40 lm/W
- CCT: 2714 K
- CRI: 80
- Test Laboratory:  
UL – Luminaire Testing Laboratory (LTL)
- Report Number: 23944  
\* Design process samples tested

### Model Number / Dimensions:

B10  
Base: 1.25" Lamp: 2.13"

### Availability:

November 2011

### Contact Information:

OSRAM SYLVANIA  
100 Endicott Street  
Danvers, MA 01923  
1-800-LIGHTBULB  
[www.sylvania.com](http://www.sylvania.com)



## RadioRA® 2 Phase-Adaptive Dimmer

Manufacturer: [Lutron Electronics, Inc.](#)

The phase-adaptive dimmer is a breakthrough product designed to control the multiple light sources of today and the future. The phase-adaptive dimmer is compatible with: ELV, MLV, incandescent, halogen and dimmable LED and CFL load types. While this would have required several different wallbox controls in the past, this new dimmer is able to sense the load type that it is connected to and change its output waveform to properly and safely control that load. This technology, previously available in Lutron's remote panel-based controls, is now available in a standard wallbox configuration – the Lutron Maestro dimmer style. To respond to the ultra-low wattages of high-efficacy lighting, the dimmer has a 5-watt minimum load, but scales all the way up to a 600-watt output. It can be connected to several other wallbox locations for 3- and 4-way dimming. The dimmer is amazingly compact, with a back box penetration of only 1 1/8", making installation simple. This dimmer allows the halogen bulb installed today to be replaced by a compact fluorescent bulb tomorrow and later replaced with an LED load – without ever having to replace and reprogram the system control.

### Model Number and Dimensions

RRD-6NA-XX, where XX denotes color

Dimensions (with wallplate):  
Width: 2.94" Height: 4.69" Depth: 1.13"

### Availability:

Currently available

### Contact Information:

Lutron Electronics  
7200 Suter Road  
Coopersburg, PA 18036  
610.282.3800  
888.588.7661  
[www.lutron.com](http://www.lutron.com)





[www.lightingfortomorrow.com](http://www.lightingfortomorrow.com)